



A Mark of Quality
BondChem@NewYork.USA.com

BondChem

Construction Chemicals



BondTank EP (2K Solvent Free, Non toxic, Epoxy Coating for Water Tanks)

BondTank EP is a two pack non-toxic solvent free high build, protective epoxy resin coating for concrete & metal water tanks. It does not support the growth of bacteria and can be safely used in areas where contact with foodstuffs is envisaged or for coating potable water storage tanks. On curing it produces high gloss, heavy bodied, ultra dense, hygienic and easily cleanable surface.

Uses: For the internal protection of concrete or metal tanks containing drinking water, certain chemicals, wine, oil, sea & brackish water and fuel. As an impervious, resilient and chemically resistant floor or wall coating in food manufacturing plants, breweries, canning and bottling factories. As a protective & decorative coating in laboratories, abattoirs, etc. Other usage areas include oil refineries, paper mills, power stations, garages, hospitals, sugar refineries, hangars and most liquid containment areas.

Advantages:

- Solvent free, easy to apply by brush, roller, or spray guns
- Fast curing helps accomplish the job of recoating without long wait for curing
- Easy to use for many long lasting applications
- High Build, Non-toxic, Waterproof & Protective coating
- Resistant to chlorides & sulphates usually present in the soil
- Environment friendly and resistant to many chemicals

Directions for use:

Surface Preparation: All concrete or metal surfaces should be clean, dry and free from contamination. For **bare steel** abrasive blast cleaning to Sa3 is recommended. Power tool cleaning, for small area preparation, may be acceptable to St2, depending on exposure conditions. Clean, dry and undamaged shop primed surfaces are necessary requirements to paint over shop primed metal. For **coated surfaces**, clean, dry and undamaged compatible primer coat is necessary for further painting. **Concrete Substrates** should be mechanically prepared by bush hammering, grit blasting, etc., to produce a clean, exposed aggregate finish, free from dust, oil, grease, paint, laitance etc. to provide a 'key' for the **BondTank EP**.

Mixing: Stir well both the components separately in their containers, and then pour part B into the container of Part A, and mix slowly (300-400 rpm) with a jiffy mixer for 1-2 minutes.

Application: Apply the mixed material on the surface using brush or roller or airless spray @ 240 micron per coat. A second coat is applied at right angle after the first coat is fully dry. It is recommended to apply two coats of **BondTank EP** to get a dry film thickness of 500 micron (approx). Embed glass fibres mesh around pipes, over cracks, ridges of the roof, joint movements, corners & edges, gutter channels, etc. A third coat may be applied where pedestrian traffic is expected.

Working Time:

BondTank EP has a working time of approximately 30 minutes at 25°C after the two parts are mixed.

Curing:

BondTank EP applications are epoxy based products and in common with all such materials, must be cured in accordance with curing practice. It is recommended to leave the first coat of application for 6-8 hours before the application of second coat and the same way subsequent coats if required.

Typical Properties:

Appearance	: Light Grey or Dark Grey
Pot life @ 30°C	: 30 minutes
Mixed Density	: 1.6 ± 0.05kg
Initial Cure	: 12 hours at 30°C
Final Cure	: 72 hours at 30°C
Coverage	: 300gm per coat
Dry Film Thickness	: 240 micron
Recommended DFT	: 300 – 400 microns

Pack Size: 5 Kg & 20 Kg packs

Storage:

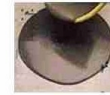
BondTank EP should be stored in tightly sealed original factory containers. Store in a horizontal position to prevent moisture accumulation on the drum head, protect from freezing and keep out of direct sunlight.



A Mark of Quality
BondChem@NewYork.USA.com

BondChem

Construction Chemicals



Shelf Life:

18 months if stored in proper storage conditions as per the local regulations. Keep the paint container in sealed condition under shed, away from direct sunlight and extreme temperatures. Do not put back any unused material back in the original container.

Handling:

BondTank EP is non-flammable and non-toxic in nature. Avoid contact with eyes and skin as it may cause irritation. Splashes of **BondTank EP** should be washed off immediately with clean water. Wear necessary gloves and dust mask.

Technical support:

BondChem offers comprehensive technical support service & specification assistance in locations to our channel partners, end users, and contractors.

Quality & Care:

All the products manufactured and originating from BondChem Construction Chemicals' facilities are independently tested and certified under a BondChem Management System to conform with the requirements of the quality, environmental, health & safety Standards.

Health & Safety Precautions:

As a general rule, avoid skin and eye contact by wearing overalls, gloves, goggles, and air mask etc. Spillage on skin should immediately be removed by thorough washing with water and soap or suitable cleaner. Eye should be flushed with fresh water. Avoid inhalation of vapours and paint mist by wearing suitable air mask. In the event of ingestion and eye contact, seek medical attention immediately. Painting must be carried out in well ventilated area. Local safety regulations must be adhered to.

